

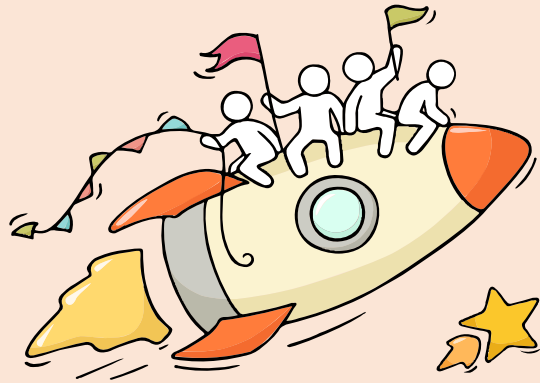
Welcome Back!

Briefing Slides for Release of 2024 GCE O-Level Results

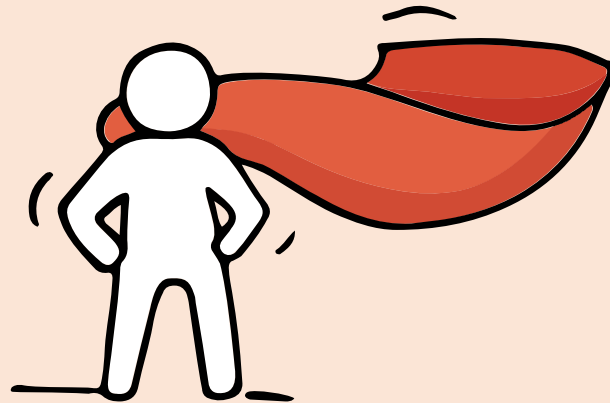


Dear students,

You have worked hard to reach this stage. Let's celebrate our efforts!



Remember that while **everyone's educational journey is different,** we can each have a fulfilling outcome!



Resources to support you as you receive your results

Receiving your results and making decisions about your post-secondary pathways can be exciting to some, but stressful to others.

Scan this QR code for an infographic with some helpful resources to support you.



<https://go.gov.sg/olevelstudentresource>



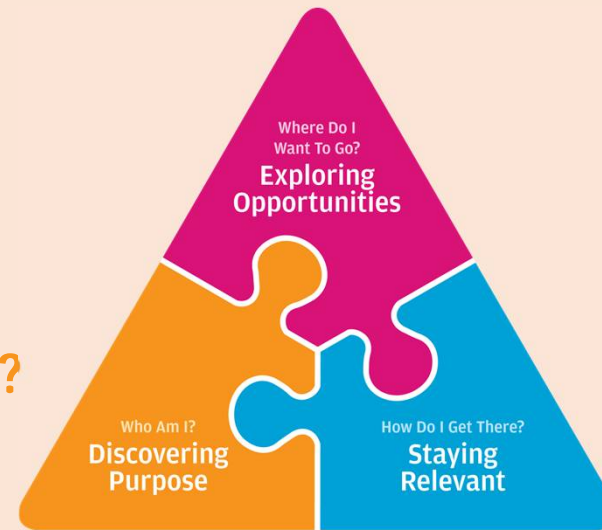
Thinking about Your Next Step?

Consider these questions...

Where do I want to go?

Who am I?

How Do I Get There?



Education & Career Guidance

In the infographic, you can find resources which can help you make informed decisions.

PLANNING YOUR NEXT STEP

These resources will help you chart your path ahead:



• What's Next Brochure
<https://go.gov.sg/whats-next-olevel>



• Contact the ECG Centre @ MOE
<https://go.gov.sg/moe-ecg-centre>

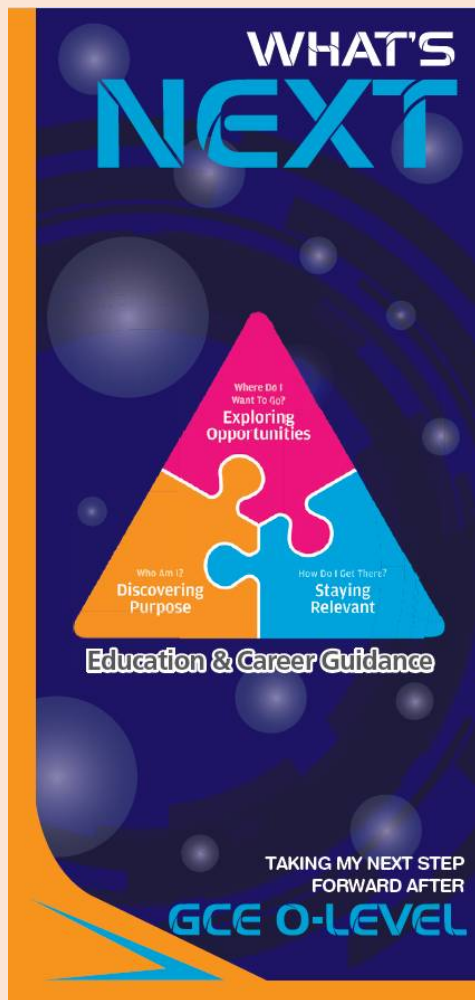


• MySkillsFuture Student Portal
<https://go.gov.sg/MySFSec>



• Chat with your school's ECG Counsellor

Resources to help you make informed decisions



PLANNING YOUR NEXT STEP

These resources will help you chart your path ahead:



• What's Next Brochure

<https://go.gov.sg/whats-next-olevel>



• Contact the ECG Centre @ MOE

<https://go.gov.sg/moe-ecg-centre>



• MySkillsFuture Student Portal

<https://go.gov.sg/MySFSec>



• Chat with your school's ECG Counsellor



MySkillsFuture Student Portal

Use the information and tools to explore various education and career pathways and take charge of your future.

Resources to help you make informed decisions

Information on Post-Secondary Education

Learn more about the admissions exercises and programmes



<https://moe.gov.sg/post-secondary/admissions>

Learn more about the post-secondary education institutions



<https://moe.gov.sg/post-secondary/overview>

Be Empowered

Discover On My Way



About Discover On My Way (D:OMW)

Discover your education and career interests and chart your personal and professional future with **Discover On My Way!** Explore different careers, connect with industry professionals and peers, and get firsthand exposure at various job roles. Let's get you on your way to discovering!

[Join Programmes!](#)

We know – deciding on which course to take and what career to pursue isn't easy... Through programmes organised by NYC and our partners, you'll be able to meet professionals from various industries and youth on the same journey as you.



Outward Bound Job Taster



Esports Events Management Job Taster



Career conversation and discovery



<https://go.gov.sg/domw>

Concerned About Your Next Step?

Stop

- Calm yourself down. Take a few deep breaths.

Think

- Think through the different options that are available for you. Keep things in perspective.
- Remember that the O-Level is not the end point and is only one part of your life journey.

Do

- Have conversations with trusted adults who know you well to advise and guide you (parents, teachers, ECG counsellor).
- Decide and act based on your options.

When you receive your results, you may experience a range of emotions.

Managing these emotions well will allow you to stay calm and make rational decisions.

Reaching out for support is a sign of strength

If you have questions about your options or are not coping well, you can reach out to trusted adults such as a parent/guardian, teacher, School Counsellor or ECG Counsellor. You can also talk to a trusted friend.

*Who can we
go to for ECG
advice?*

Make an appointment to speak with
your ECG Counsellor in school

OR

Make an ECG counselling
appointment via the
ECG Centre @ MOE

<https://go.gov.sg/moe-ecg-centre>



Meet ECG Counsellor

Not sure what pathway to choose after O-Level?

Telegram



WhatsApp



Contact me via

Email

Jerlyn_poh_yoke_hui@schools.gov.sg

Or book an online appointment via
<https://go.gov.sg/ecg-support>



Keep a lookout for some of these signs in your peers or in yourself

How can we support one another?



Having difficult emotions during a stressful and uncertain period is normal. Keep a look out for some of these signs:

- D** Deliberately avoiding others
- I** Increased irritability, restlessness, agitation, stress and anxiety
- S** Sending or posting moody messages on social media
- T** Talking about death or dying
- R** Reacting differently or gradually losing interest in things they used to like
- E** Eating more than usual or having a much reduced appetite
- S** Sleep pattern changes with difficulty falling asleep or oversleeping
- S** Slowing down of energy levels

If you notice any of these signs in yourself or your friends, **have a chat with your School Counsellor or teacher,**

Or contact SOS 24-hour hotline at **1767** or SOS 24-hour CareText Whatsapp at **91511767**
For cyber wellness related matters, call Help123 at **1800-612-3123*** or email **hello@help123.sg**

**available only from Mon to Fri (excluding Public Holidays), from 9am - 6pm.*



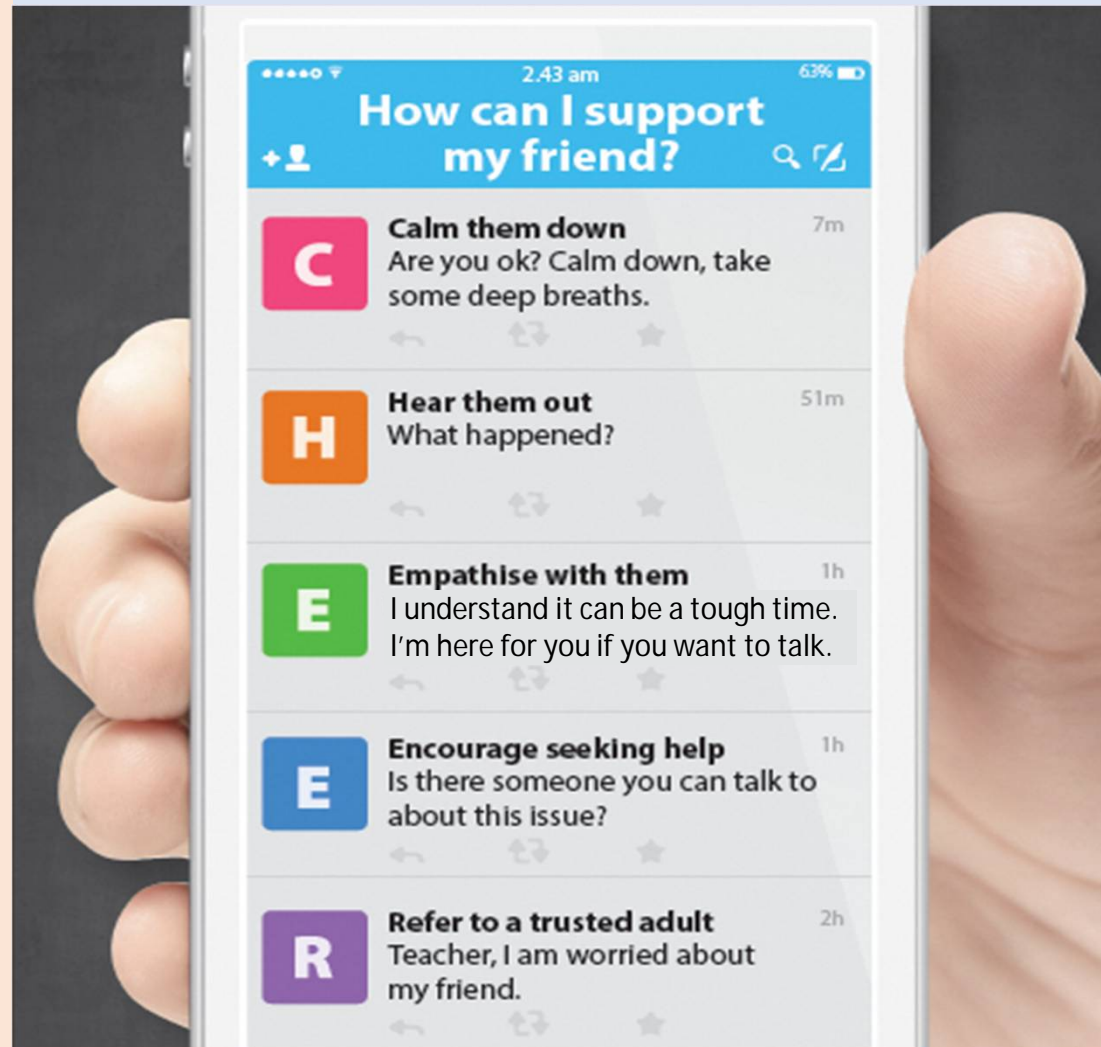
© 2023 Guidance Branch, Student Development Curriculum Division (SDCD), Ministry of Education, Singapore. No part of this final product may be reproduced or transmitted in any form or by any means, electronic or mechanical, including photocopy, recording or any other information storage and retrieval system, without written permission from SDCCD, MOE.

Supporting Your Friend

- We may each experience different emotions upon receiving the results.
- You can share your friends' joy by congratulating them.
- If your friends appear to be disappointed with their results, encourage them.
- Alert a teacher if you are worried for them.



Keep a lookout for your friends in distress. You can support them in the following ways:



Support is readily available for you.

There are other hotlines and chats available if you are more comfortable seeking help using these platforms. These can also be found in the infographic which you accessed earlier.



SOS provides round-the-clock emotional support for those in distress, thinking of suicide or affected by suicide.

Call: **1767**
(24-hour helpline)

Whatsapp: **9151 1767**
(24-hour Care Text)

Community Health Assessment Team

(CHAT) provides personalised and confidential mental health checks and consultation for youths. To speak with a youth support worker, you can:

Visit: **CHAT Hub at *Scape, 2 Orchard Link, #04-01A**

Call: **6493 6500/ 6501**

Email: **CHAT@mentalhealth.sg**

mindline.sg is an online platform that provides tools, tips and resources to help you manage your health and well-being. Find out more at: www.mindline.sg



TOUCHline is a helpline to provide youths with emotional support and practical advice.

Call: **1800-377 2252**

Monday- Friday (Excluding Public Holidays):
9am – 6pm

Carey is an online platform by Care Corner that provides free mental health check-ins with mental health professionals. Find out more at: <https://carey.carecorner.org.sg/>

eC2 is an e-Counselling Centre where you can talk to a trained counsellor about the issues you are facing, right where you are.

Chat with a counsellor at: www.ec2.sg

Monday – Friday (Excluding Public Holidays):
10am – 12pm & 2pm – 5pm

**The O-Level
examination is not
the destination.**

**It is part of your
education journey.**



Details of Admissions Exercises

You can find the details of the various admissions exercises from the **Post-Secondary Admissions Exercises booklet** that can be downloaded from:

<https://www.moe.gov.sg/post-secondary/admissions>

- JAE
- JIE 'O'
- LASALLE
- NAFA



A Guide to **Post-Secondary Admissions Exercises**

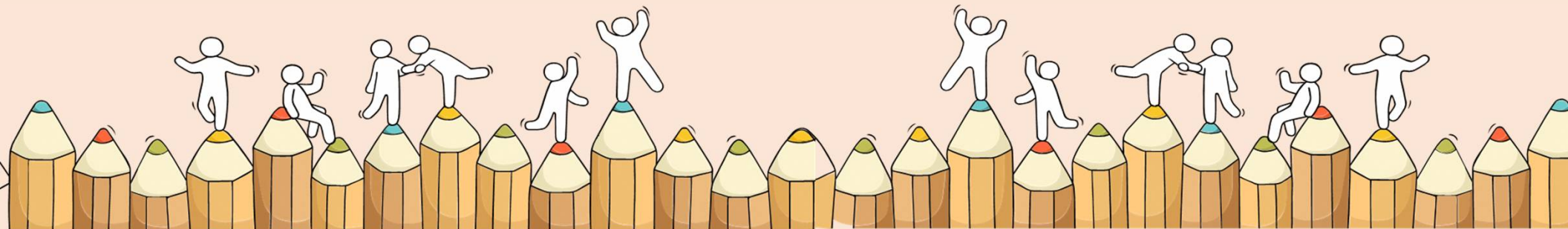
The various pathways you could explore after secondary school that provide opportunities for continuous learning



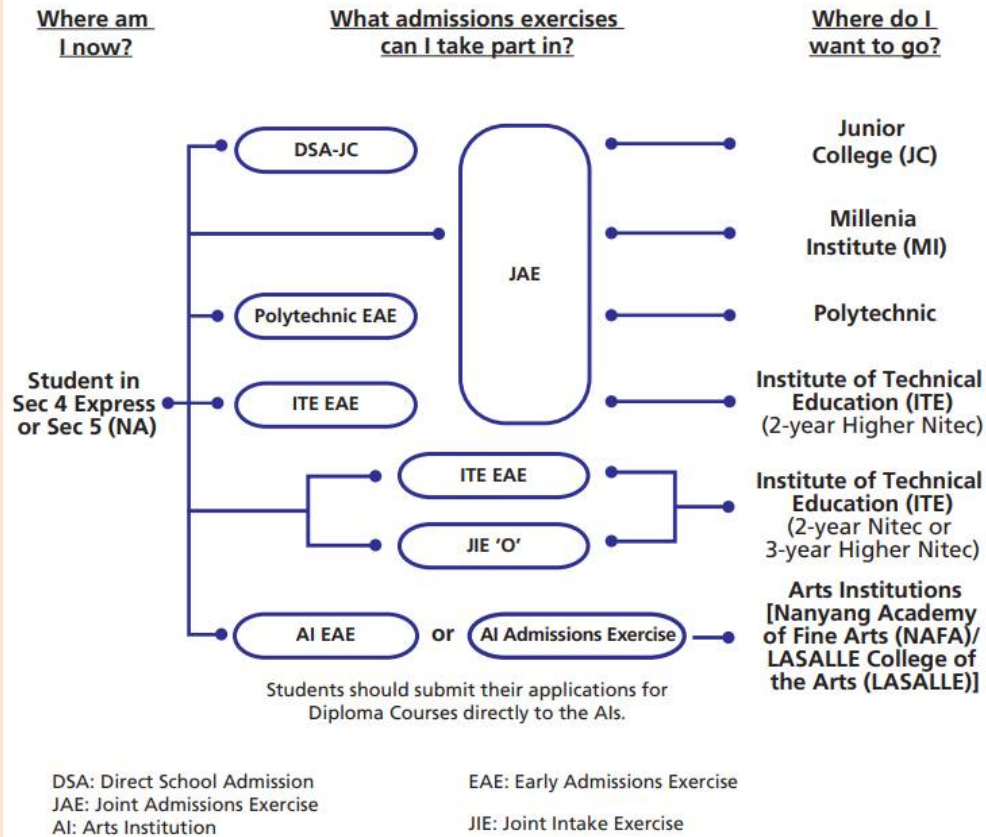
Ministry of Education
SINGAPORE

Admissions Exercises

Things to note



Post-Secondary Admissions Exercises for O-Level Students



<https://www.moe.gov.sg/post-secondary/admissions>

For the list of Nitec/Higher Nitec courses, please visit <https://www.ite.edu.sg/courses/full-time-courses/nitec-and-3-year-higher-nitec> .

Source: A Guide to Post-Secondary Admissions Exercises

Application Timeline

Admissions Exercises	LASALLE NAFA	JAE JIE 'O'
Application Period	Starts Oct 2024	Jan 2025

Details of Admissions Exercises



JAE – Joint Admissions Exercise

JAE enables GCE O-level holders to apply for courses offered by JCs, MI, polytechnics and ITE (2-year *Higher Nitec* courses).

JAE: <http://go.gov.sg/applyjae>



JIE 'O' – Joint Intake Exercise 'O'

The JIE 'O' is conducted to enable GCE O-Level holders to apply for the 2-year *Nitec* or 3-year *Higher Nitec* courses conducted by ITE.

JIE 'O': <https://go.gov.sg/applyjie>

Details of Admissions Exercises



Arts Institutions - NAFA/LASALLE

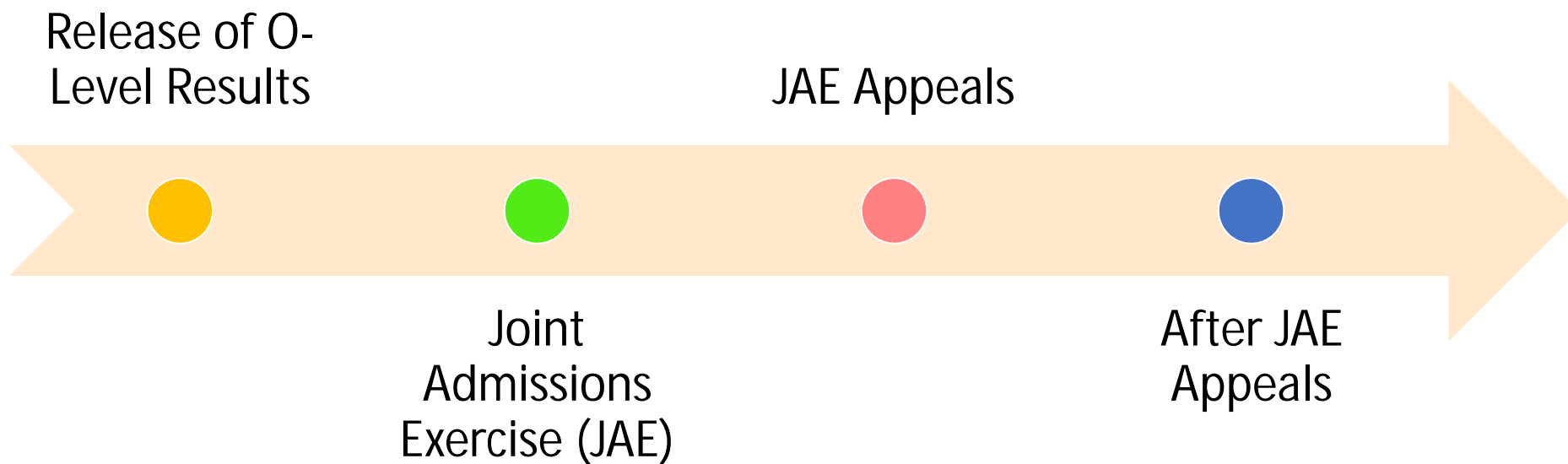
GCE O-Level holders with the aptitude and interest to pursue the creative arts at the tertiary level may apply for diploma programmes at the Arts Institutions (AIs). Each AI runs its own admissions exercise, and interested students should apply directly to the institution.

The AIs also run their own Early Admission Exercise, an aptitude-based admissions exercise open to graduating O-Level students, final-year *Nitec* and *Higher Nitec* students from ITE and graduating Integrated Programme (IP) / International Baccalaureate (IB) Year 4 students. This exercise allows students to apply for and receive conditional offers for admission to NAFA and LASALLE prior to receiving their final grades.

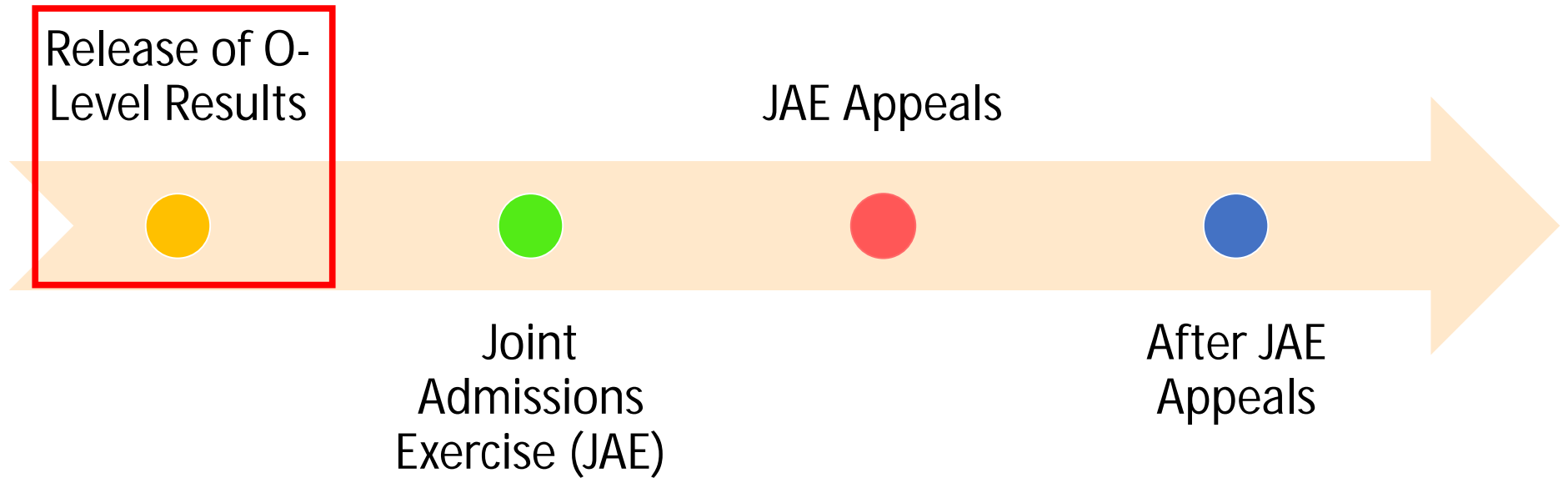
NAFA: <http://go.gov.sg/applynafa>

LASALLE: <https://go.gov.sg/applylasalle>

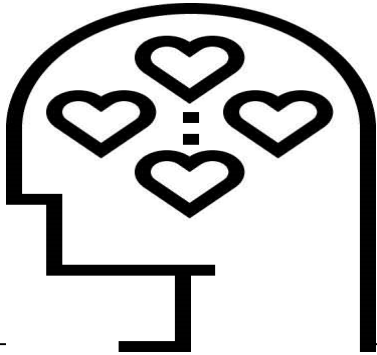
Overview



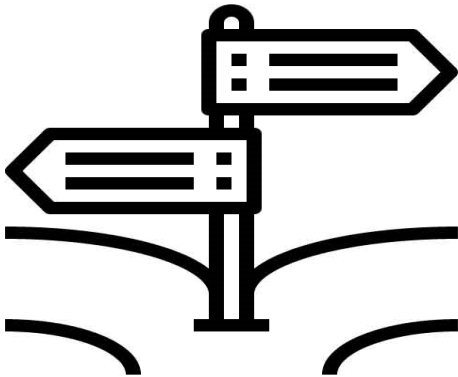
Release of O-Level Results



Release of O-Level Results



- **What am I good at? Are there areas that I am interested in?**
 - Consider courses that align with your strengths and interests (e.g. engineering, healthcare or design courses).



- **Where should I go?**
 - List down all the institutions that offer courses that are aligned to your strengths and interests
 - For example, if you are interested in design, you could list down the design courses offered by the polytechnics and ITE, such as
 - Diploma in Film, Sound & Video (NP)
 - Diploma in Sonic Arts (RP)
 - *Higher Nitec* in Film and Video Production (2-year)(ITE)
 - *Higher Nitec* in Technical Theatre & Production (2-year)(ITE)

Joint Admissions Exercise (JAE)

Release of O-
Level Results



Joint
Admissions
Exercise (JAE)

*Note:

Students who had accepted offers through the 2024 DSA-JC or EAE-Poly will not be eligible to participate in the JAE. (unless they did not meet the admission criteria)

Eligible school candidates will receive a **digital copy of Form A** via their registered email addresses from 3.00pm on Friday, 10 Jan 2025.

All candidates eligible for JAE may also download a copy of Form A from the JAE-Internet System (JAE-IS) using Singpass during the application period.


The JAE-IS will be accessible from **from 4pm, 10 Jan 2025 (Fri) to 4pm, 15 Jan 2025 (Wed)** for applicants to submit their application through the JAE-IS at <https://www.moe.gov.sg/jae> using their Singpass.

Joint Admissions Exercise (JAE)

Release of O-Level Results

Joint Admissions Exercise (JAE)

This is how your **Form A** will look like:



20XX Joint Admissions Exercise Form A

Ministry of Education
SINGAPORE

Name : TEST NAME Address : 111 BUKIT BATOM EAST AVENUE 1 #11 -11 SINGAPORE 111111 School Code : 1111	Centre Index No. : 222222217
--	------------------------------

Please apply your course choices by **DD/MM/YYYY, 04:00 PM.**

Your 20XX GCE O-Level Examination results:
 ENGLISH LANGUAGE = A2, MALAY = B3, MATHEMATICS = C6, SCIENCE (CHEMISTRY & BIOLOGY) = B3,
 PRINCIPLES OF ACCOUNTS = B3, HUMANITIES (SOCIAL STUDIES, HISTORY) = B3, GEOGRAPHY = C5
 CCA = EXCELLENT

Your gross aggregate scores (without bonus points):

JC	MI	Polytechnic				ITE		
L1R5	L1R4	ELR2B2-A	ELR2B2-B	ELR2B2-C	ELR2B2-D	ELB4-A	ELR1B3-B	ELR2B2-C
19	14	14	17	17	17	14	14	17

Your eligible courses:

- You meet the entry requirements for the below courses and are eligible to apply. However, a place in the course is not guaranteed as admission is based on merit, your choices and available vacancies.
- Course codes and descriptions can be found in www.moe.gov.sg/jaecourses.

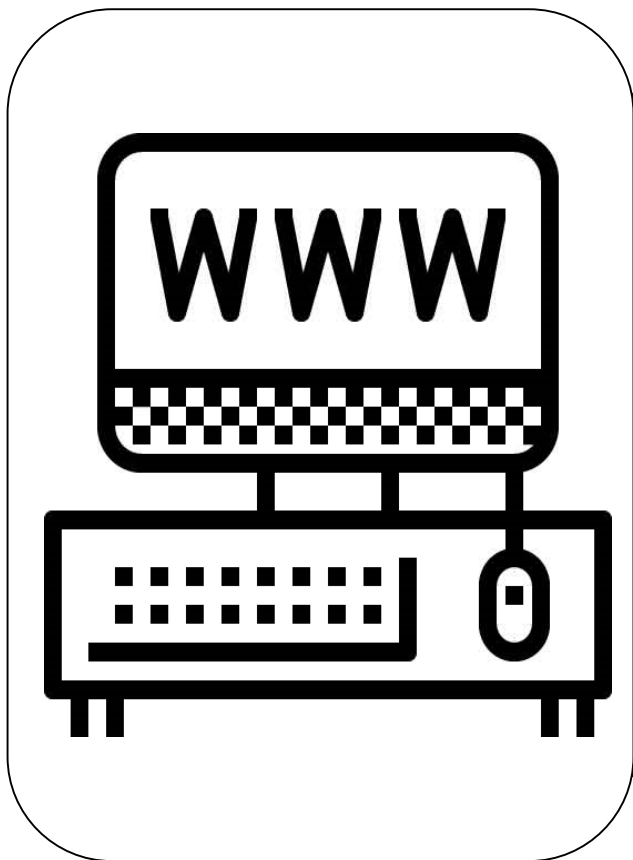
JC/MI:
 You are eligible for all JC/MI courses.

Polytechnic/ITE:
 C- Nanyang Polytechnic, N- Ngee Ann Polytechnic, R- Republic Polytechnic, S- Singapore Polytechnic, T- Temasek Polytechnic, V- Institute of Technical Education

C27	C28	C29	C30	C31	C32	C34	C35	C36	C38	C41	C42	C43	C45	C46	C47	C49	C50	C51
C52	C54	C62	C65	C67	C69	C70	C71	C72	C73	C75	C80	C81	C85	C87	C89	C93	C94	C96
C97	C98	N11	N12	N13	N14	N15	N40	N41	N42	N43	N44	N45	N48	N50	N51	N53	N54	N55
N56	N57	N59	N60	N65	N67	N69	N71	N72	N73	N74	N81	N82	N83	N85	N91	N93	N94	N96
N97	N98	R11	R12	R13	R14	R16	R17	R18	R19	R21	R22	R24	R25	R26	R28	R32	R33	R34
R35	R36	R37	R39	R40	R42	R43	R45	R46	R47	R48	R49	R50	R52	R54	R55	R56	R57	R58
R59	R60	R61	R62	R63	R64	R65	R28	R29	R30	S31	S32	S38	S40	S42	S47	S48	S50	S53
S54	S63	S64	S66	S67	S68	S69	S70	S71	S73	S74	S75	S76	S88	S89	S90	S91	S94	S95
S98	S99	T01	T02	T04	T07	T08	T09	T10	T13	T18	T20	T22	T23	T25	T26	T28	T29	T30
T33	T35	T38	T40	T43	T45	T48	T50	T51	T53	T56	T58	T59	T60	T62	T63	T64	T65	T66
T67	T68	T69	T70	T71	V10	V11	V12	V13	V14	V15	V16	V17	V18	V19	V20	V21	V22	V23
V24	V25	V26	V27	V28	V29	V30	V31	V32	V33	V34	V35	V36	V39	V40	V42	V47	V49	V52
V53	V54	V55	V60	V61	V62	V63	V64	V65	V66	V67	V68	V69	V70	V71	V72	V73	V74	V75
V76	V77	V78	V79	V80	V81	V82	V84	V85	V87	V88	V89	V90	V91	V92	V93	V94	V96	V97
V98																		

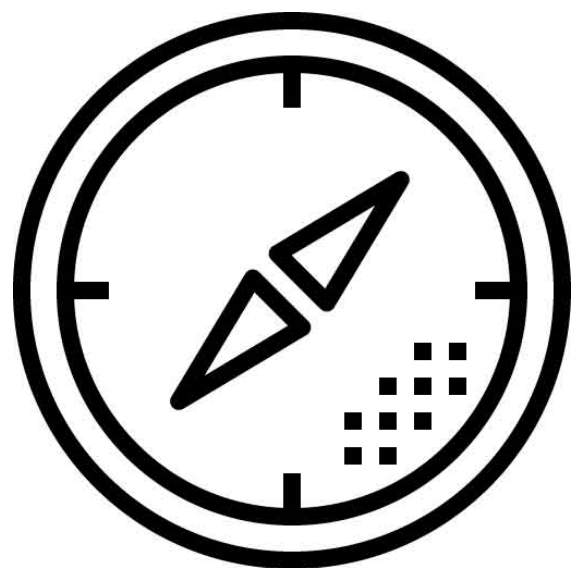
*Form A contains gross aggregate scores for JC, MI, polytechnic and ITE aggregate types, and the JAE courses that you are eligible to apply.

Joint Admissions Exercise (JAE)



- **Which courses should I choose?**
- Use all your 12 JAE choices carefully
- Refer to the polytechnic and ITE websites to find out more
- For polytechnic and ITE 2-year *Higher Nitec* courses:
<https://moe.gov.sg/coursefinder>

Joint Admissions Exercise (JAE)



- You can also refer to the CourseFinder on MOE's website (<https://www.moe.gov.sg/coursefinder>) for details on the courses offered, including information on the subject-specific minimum entry requirements (MERs), and the net aggregate range for specific courses based on previous year JAE.
- For additional advice, you can approach your school teachers, ECG Counsellor and parents, or make an ECG counselling appointment via the ECG Centre@MOE at <https://go.gov.sg/moe-ecg-centre>.

JAE Worksheet



www.moe.gov.sg/jaeworksheet

2025 JOINT ADMISSIONS EXERCISE WORKSHEET

This JAE worksheet is provided to assist you before you do your online course application.

(A) Personal Particulars

Please fill in your personal particulars.

NRIC/FIN	:	_____
Name	:	_____
Mobile Number*	:	_____
Contact Number	:	_____
Email Address^	:	_____

*Your posting result will be sent via SMS to a valid Singapore mobile number.

^Your JAE verification slip, which captures your submitted course preferences, will be sent to this email address.

(B) Course Preference

- You can apply for courses which you meet the eligibility criteria. Please refer to your Form A for course eligibility.
- Course codes and descriptions can be found in www.moe.gov.sg/jaecourses.
- You are strongly advised to make full use of the 12 choices, where applicable.

Choice Order	Course Code	Choice Order	Course Code
1 st		7 th	
2 nd		8 th	
3 rd		9 th	
4 th		10 th	
5 th		11 th	
6 th		12 th	

(C) Elective Programmes

This section only applies to students who are eligible for the following elective programmes.

If you qualify and wish to apply, you must select the JC(s) offering the programme as one of your choice(s) in (B) Course Preference.

Please note that you may apply for only **ONE** Programme.

<u>Chinese Language Elective Programme (CLEP)</u>	<u>Malay Language Elective Programme (MLEP)</u>	<u>Tamil Language Elective Programme (TLEP)</u>
<p>I would like to apply for CLEP in the following JC(s):</p> <p><input type="checkbox"/> Dunman High School</p> <p><input type="checkbox"/> Hwa Chong Institution</p> <p><input type="checkbox"/> Jurong Pioneer JC</p> <p><input type="checkbox"/> Nanyang JC</p> <p><input type="checkbox"/> Temasek JC</p>	<p>I would like to apply for MLEP in the following JC(s):</p> <p><input type="checkbox"/> Jurong Pioneer JC</p> <p><input type="checkbox"/> National JC</p> <p><input type="checkbox"/> Raffles Institution</p> <p><input type="checkbox"/> Tampines Meridian JC</p> <p><input type="checkbox"/> Yishun Innova JC</p>	<p>I would like to apply for TLEP in the following JC(s):</p> <p><input type="checkbox"/> Anderson Serangoon JC</p> <p><input type="checkbox"/> National JC</p>

JAE Application Results

Release of O-
Level Results



Joint
Admissions
Exercise (JAE)

JAE
Application
Results



The posting results of the JAE application are scheduled for release on **Thursday, 4 Feb 2025** through the following modes:

- a. Short Message Service (SMS) to the Singapore mobile phone number provided by the applicant during application
- b. JAE-IS, which is accessible through the JAE website

JAE Application Results

Release of O-
Level Results



Joint
Admissions
Exercise (JAE)

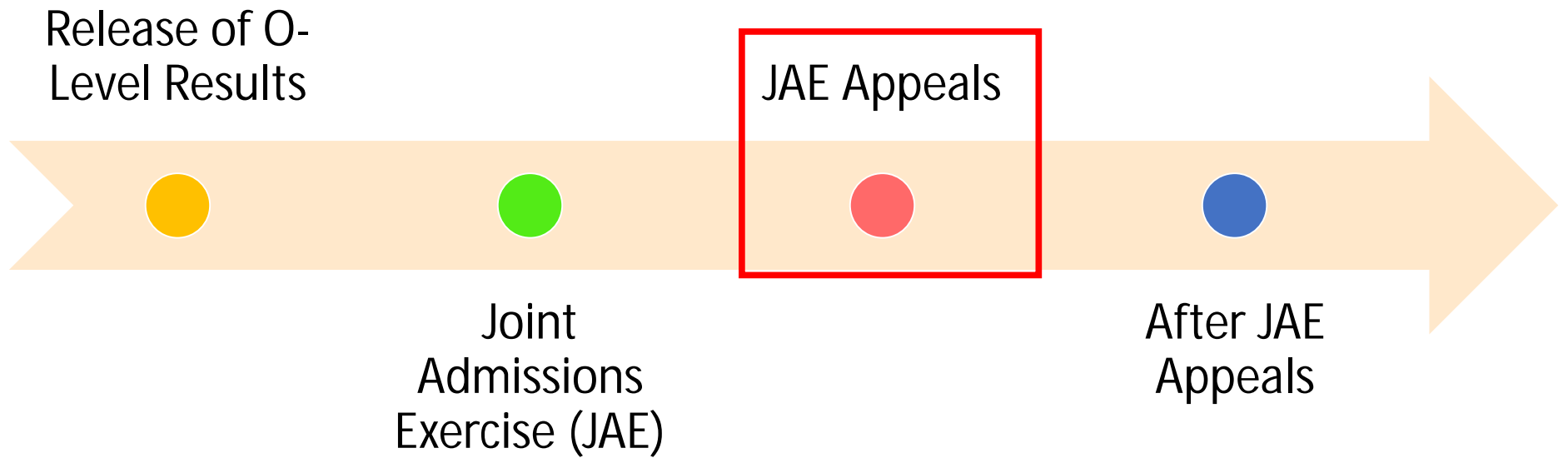
JAE
Application
Results



- Applicants posted to JCs and MI are to report to their posted institutions on Wednesday, 5 February 2025.
- Applicants posted to ITE will receive an email with the enrolment details on Tuesday, 4 February 2025, and applicants posted to polytechnics will receive their enrolment details by end-February 2025.

CONFIDENTIAL

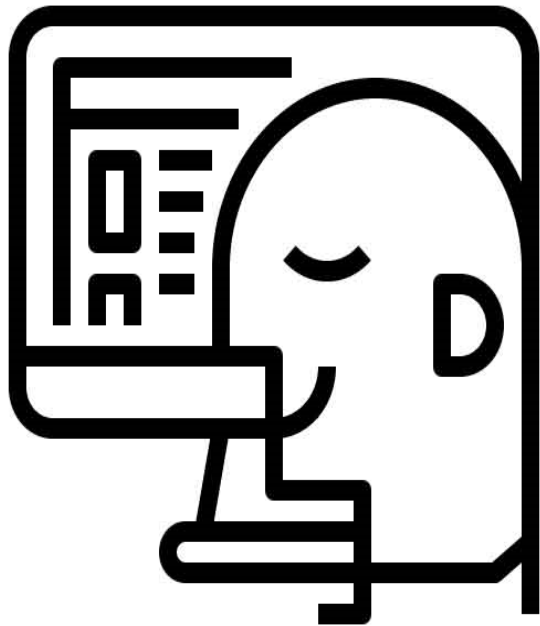
JAE Appeals





- **Which courses should I appeal for?**

- You can only appeal for courses where you meet the current year's cut-off point, as well as the MERs
- Refer to the JAE appeals website for information on the net aggregate range for the previous JAE for specific courses for the current year
- Refer to the CourseFinder on MOE's website (<https://www.moe.gov.sg/coursefinder>) for information on the subject-specific MERs on courses that you are interested to appeal
- Think about appealing for a range of courses, including those offered by ITE



- **How do I appeal for a course?**

- Submit your appeal through the JAE appeals website:
<https://jaeappeal.edu.sg>
- Use all your 6 JAE appeals choices carefully
- For additional advice, you can approach your school teachers, ECG Counsellor and parents, or make an ECG counselling appointment via the ECG Centre@MOE at
<https://go.gov.sg/moe-ecg-centre>

After JAE Appeals

Release of O-
Level Results

JAE Appeals

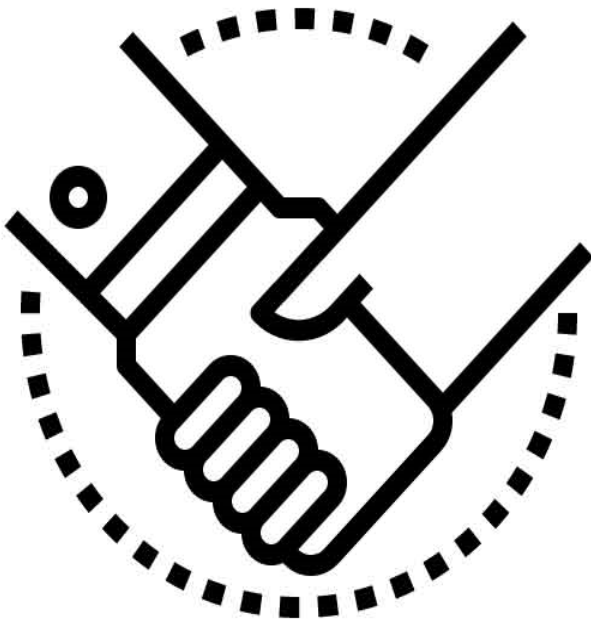
Joint
Admissions
Exercise (JAE)

After JAE
Appeals



- **How do I check for my JAE appeals outcome?**
 - You will be informed of your appeal outcome through the online appeals portal, as well as through SMS notifications
 - Look out for your appeal outcome, and consider the course you were posted to carefully
 - If you did not receive a posting by the end of JAE appeals, you will be offered an alternative course as an additional option
 - If you are offered an alternative posting, do accept it and give it a try, as it will give you a chance to continue your studies

After JAE Appeals



- **Can I still appeal after the end of JAE appeals?**
- You can still appeal directly to the polytechnics and ITE for courses that you are interested in
- You can do this even if you have accepted the posting offered through JAE appeals

Sec 4NA: Polytechnic Foundation Programme (PFP)

- PFP-eligible students will receive a copy of **Form P** from their respective secondary schools in person.
- Interested students should use their respective passwords in Form P to submit their applications online via the PFP website at pfp.polytechnic.edu.sg/PFP/index.html.
- Applications will open from **1.30pm on Friday, 10 January 2025**, to **4pm on Wednesday, 15 January 2025**
- Posting results will be released at **1.30pm on Wednesday, 22 January 2025** through the PFP website
- Students to indicate whether they wish to accept, reject, or appeal for a change of course by **4pm on Monday, 27 January 2025**.

Sec 4NA: Direct-Entry-Scheme to Polytechnic Programme (DPP)

- Submit their DPP applications online via the DPP application portal at www.ite.edu.sg/apply-for-ite-courses.
- Applications for will open from **12am on Friday, 10 January 2025**, to **11.59pm on Tuesday, 14 January 2025**.
- Posting results for applications will be released at **9am on Wednesday, 17 January 2025** through the DPP application portal
- Students will be required to indicate whether they accept or reject the DPP offer by **11.59pm on Tuesday, 21 January 2025**.

For successful DPP and/or PFP applicants

- Students who have been offered a place in the DPP under the final application phase should report to ITE on **Wednesday, 22 January 2025**
- Last day of school for Secondary 5 students who have accepted a place in the PFP will be on **Friday, 31 January 2025**. Students will be informed by the respective polytechnics on the enrolment dates for the PFP.
- Students who have accepted a place in the earlier application phase of the DPP in December but decide to take up a PFP offer now must withdraw from the DPP first before they are able to take up the PFP offer. DPP-enrolled students should check with their ITE class advisor for more details on the DPP withdrawal process and deadlines for withdrawal.

Open House

Do check out the websites of the various Junior Colleges (JCs), Polytechnics, and other institutions for the specific dates and times of their open houses.

Important Documents you will receive

- O Level Certificate
- Result Slip
- ECG Materials
- Leaving Certificate

~Thank you~

